

## MINI5/6 VOICE, HARDWARE & ACCESSORIES

A range of voice products, floor and wall mounted enclosures together with power distribution units to support both the Cat5e and Cat6 solutions. Accessories include termination tooling and basic continuity testers.

### Voice & Fibre Modules

Voice Secondary	<i>MT50-SESA</i>
Voice Full Master	<i>MT50-FMSA</i>
Voice PABX	<i>MT50-PASA</i>
Fibre ST Module	<i>MT50-AMST</i>
Fibre SC Simplex	<i>MT50-AMSC</i>
Fibre LC Duplex	<i>MT50-AMLC</i>

Angled 25x50mm modules with label window.  
Voice (BT socket) modules with dual LSA/Krone & 110 termination snap in jacks. Snap into wallplates shown below.



Voice



Fibre

### Voice Panels

50 port 1U voice panel	<i>MP50-1UTEL3</i>
------------------------	--------------------

3 pair voice panel suitable for use with digital or analogue systems. Compatible with LSA/Krone style punch down tools on page 15. Numbered ports and rear cable management.



### Filler panels & brush panels

1U filler panel	<i>PPB-1UB</i>
2U filler panel	<i>PPB-2UB</i>
3U filler panel	<i>PPB-3UB</i>
4U filler panel	<i>PPB-4UB</i>
1U brush panel	<i>HBBE-1U</i>

Filler panels reserve rack space for future use & help keep installations manageable by acting as a divider between devices.

Brush panels give a neat appearance when patching from front to back within a rack.



Filler panel



Brush panel



## RJ12 jack (dual punch down)

*MT50-RJ12*

6 position 6 contact jack snaps into Mini5 25x50mm wallplate modules, MT50-SAMO or MT50-4000.



Free Hanging

Reducers

## RJ12/45 Couplers & Reducers

### Free hanging couplers

RJ45 CAT4 UTP (Beige) *RJ45FCBE*

RJ12 6 contact (Black) *RJ11FCBE*

For thru coupler panels see page 8.

### Reducers

Reduces mating face of 6 position RJ12 to RJ11 4 position *RJC64*

Reduces mating face of 8 position RJ45 to RJ12 6 position *RJC86BK*

Reducer snaps into couplers mating face.



## RJ45 T adapters

3 x RJ45 female *RJ45T3F*

2 RJ45 females - 1 x male *RJ458P8CT*



## RJ11 - BT adapters

RJ11 skt - 4 way BT plug *30244045*

RJ11 plug - 4 way BT skt *30244039*

## Data/Voice adapters

### Leaded adapters

Secondary leaded	3024402E
PABX leaded	3024402D
Full master leaded	30244021

### Switchable leaded adapter

Secondary/PABX	DVA-SWITCH
----------------	------------

### Coupler adapters

Secondary coupler	30244016
PABX coupler	30244012
Full master coupler	3024400E

Allows telephone equipment with BT plugs to be connected to an RJ45 cabling network. Leaded versions are RJ45 plug to BT socket, coupler adapters are RJ45 socket to BT socket. The switchable version is ideal when it is not known beforehand which type of adapter is needed to connect to the phone system. It may be changed between secondary or PABX at the flick of a switch.



Leaded



Switchable leaded



Coupler

## Tool Kits

### Kit contains:

1 x RJ45 UTP/STP continuity tester,  
BNC coax tester, RJ12/45 crimp  
tool, UTP/STP stripping tool,  
LSA/110 plastic service punch  
down tool, 20 x RJ12 plugs,  
20 x RJ45 UTP plugs, 20 x RJ45  
STP plugs, 20 x RJ45 grey boots

*MT-TKIT-RJ*

1 x RJ45 UTP/STP & BNC co-ax  
cable continuity tester,  
RJ12/45 crimp tool, UTP/STP  
stripping tool, 110 punch  
down tool.

*MT-TKIT-LAN*



## Punch down tools

Mini5 Krone compatible punch  
down tool (impact style) *CT19*

Mini5 punch down tool for Mini5/6 modules,  
Mini5 patch panels &  
Krone compatible products. *CT28*

Mini5 110 punch down tool *CT110*

All the above tools terminate & cut wires.





CT37

CT33

## Mini5 UTP/STP cable strippers

Mini5 cycloplese cable stripper *CT37*

Mini5 cable stripper *CT33*

Mini5 cycloplese tool (CT37) strips UTP & STP cable, simply insert cable & rotate. Mini5 CT33 tool strips UTP/STP cable & 2/4/6/8 pair flat cable used with RJ plugs.



## Mini5 Standard Wall Boxes

600 Wide x 450mm Deep

6u *MT-WMC062*

9u *MT-WMC092*

12u *MT-WMC122*

15u *MT-WMC152*

Features include;

- \* Perspex lockable front door
- \* Cable entry gland plates.
- \* Vented top & bottom.
- \* Slide adjustable Front Profiles.



## Mini5 Wall Boxes with Side Doors

600 Wide x 450mm Deep

7u *MT-WMC07SD2*

9u *MT-WMC09SD2*

12u *MT-WMC12SD2*

16u *MT-WMC16SD2*

20u *MT-WMC20SD2*

Features include;

- \* Glass lockable front Door
- \* Cable entry gland plates.
- \* Vented top & bottom.
- \* Adjustable Front Profiles.
- \* Removable lockable side doors



## Mini5 Flat Pack Wall Boxes

600 Wide x 400mm Deep

7u *MT-FPW07*

9u *MT-FPW09*

12u *MT-FPW12*

- \* Low cost
- \* Fast assembly
- \* Glass lockable front door
- \* Vented top & bottom.
- \* Slotted Front Profiles.
- \* Colour grey.

## Mini5 Floor Standing Enclosures

	600W x 600D	600W x 800D
15U	MT-ENC1566	-
18u	MT-ENC1866	MT-ENC1868
24u	MT-ENC2466	-
27u	MT-ENC2766	MT-ENC2768
39u	MT-ENC3966	MT-ENC3968
42u	MT-ENC4266	MT-ENC4268
47u	MT-ENC4766	MT-ENC4768
	800W x 600D	800W x 800D
18u	MT-ENC1886	MT-ENC1888
27u	MT-ENC2786	MT-ENC2788
39u	MT-ENC3986	MT-ENC3988
42u	MT-ENC4286	MT-ENC4288
47u	MT-ENC4786	MT-ENC4788

## Server Enclosures

	600W x 1000D	800W x 1000D
18u	MT-ENC1861	MT-ENC1881
27u	MT-ENC2761	MT-ENC2781
42u	MT-ENC4261	MT-ENC4281
47U	MT-ENC4761	MT-ENC4781

Affordable UK manufactured enclosures.

Attractively styled with lockable glass front door, lockable removable side & rear doors. Complete with transit castors & feet.





## Enclosure Accessories

### Direct Mount Shelves

450mm deep (Max 50kg)	MT-SHE450
570mm deep (Max 50kg)	MT-SHE570
670mm deep (Max 50kg)	MT-SHE670
720mm deep (Max 50kg)	MT-SHE720
820mm deep (Max 50kg)	MT-SHE820
450mm deep (Max 100kg)	MT-SHE450HD
570mm deep (Max 100kg)	MT-SHE570HD
670mm deep (Max 100kg)	MT-SHE670HD
720mm deep (Max 100kg)	MT-SHE720HD
820mm deep (Max 100kg)	MT-SHE820HD

### Telescopic Shelf

570mm deep	MT-TEL570
670mm deep	MT-TEL670
720mm deep	MT-TEL720
820mm deep	MT-TEL820

**Baying Kit** *MT-BAYK*

**Keyboard Drawer** *MT-TELKEY*

### Plinths

600(w) x 600(d)	MT-PLI66
600(w) x 800(d)	MT-PLI68
800(w) x 600(d)	MT-PLI86
800(w) x 800(d)	MT-PLI88
600(w) x 1000(d)	MT-PLI61
800(w) x 1000(d)	MT-PLI81

### Fan Trays

Roof mount 2 Way	MT-FANT2
Roof mount 4 Way	MT-FANT4
Rack mount 2 Way	MT-FAN2RM
Rack mount 3 Way	MT-FAN3RM

**Earth bonding kit** *MT-EBK*

### Cable management rings

45x65mm (fits to profiles)	MT-JUM4565
100x90mm (fits to vertical side management on 800mm wide cabs)	MT-JUM10090

### Heavy Duty Castors

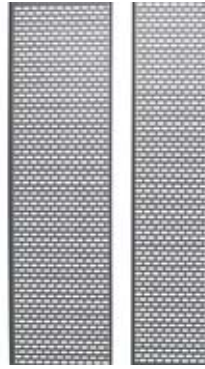
Heavy duty castors *MT-CASHD*

## Enclosure Accessories (cont.)

### Cable Trays

15u	CT15**
18u	CT18**
24u	CT24**
27u	CT27**
39u	CT39**
42u	CT42**
47u	CT47**

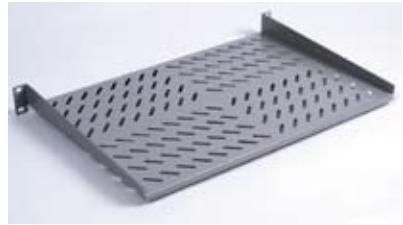
\*\* Substitute with required width, 150 or 300mm  
eg CT42150.



## Mini5 Modem Shelves

200mm depth 1U	MTV200
300mm Depth 1U	MTV300
300mm Depth 2U	MTV300-2U
400mm Depth 2U	MTV400
500mm Depth 2U	MTV500

Modem shelves are mounted to the front profiles.  
Suitable for floor standing enclosures and wall  
cabinets.



## Mini5 Wall Brackets

2U 220mm Depth	HWB-2
3U 220mm Depth	HWB-3
4U 220mm Depth	HWB-4
5U 220mm Depth	HWB-5
6U 220mm Depth	HWB-6
8U 220mm Depth	HWB-8

19" hinged wall mount brackets for panels or hubs  
where a wallbox is not required.



## Mini5 cage nuts

Pack of 50 with bright 10mm  
screws (shown right) *EAC11*

Individual with black  
16mm screw *EAC116*





## Cable tidy panels

1U with 4 metal rings	<i>HJRP-1U70</i>
1U with 5 metal rings	<i>HJRP5-1U</i>
2U with 4 metal rings	<i>HJRP4-2U</i>

Mini5 cable tidy panels are a cost effective way of managing patch cables.



## Back boxes

### Standard back boxes (PVC)

Single gang 21mm deep	<i>DP1-21PWB</i>
Single gang 32mm deep	<i>DP1-32PWB</i>
Single gang 45mm deep	<i>DP1-45PWB</i>
Double gang 32mm deep	<i>DP2-32PWB</i>

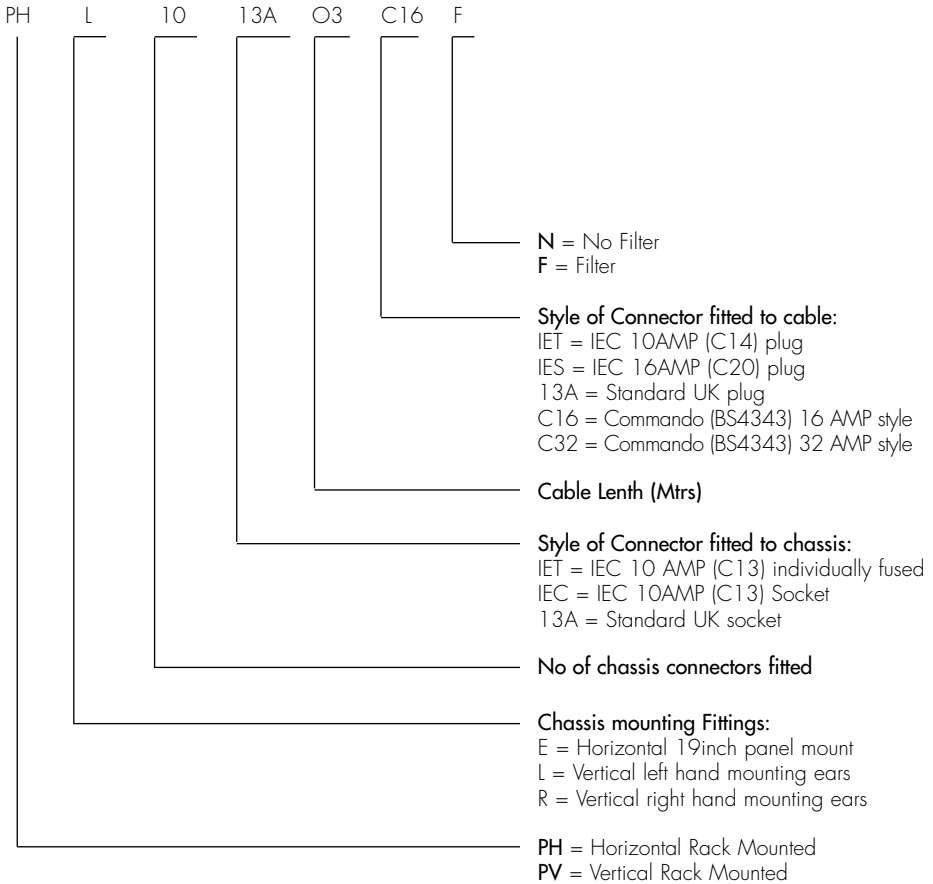
### Dry lining back boxes

Single gang 35mm deep	<i>DP1-35PWB-DL</i>
Single gang 46mm deep	<i>DP1-46PWB-DL</i>
Double gang 35mm deep	<i>DP2-35PWB-DL</i>
Double gang 46mm deep	<i>DP2-46PWB-DL</i>

Dry lining back boxes snap into cavity walls.



The new range of Mini5 PDUs all come with a hinged cover over the mains switch to prevent accidental switching on/off. They are specifically designed to fit all makes of wall and floor standing enclosures. Popular styles are kept in stock, non standard are made to order.



Popular PDUs shown below. For other variants see previous page.



### Horizontal PDU UK 13AMP

4 port	<i>PHE0413A0313AN</i>
5 port	<i>PHE0513A0313AN</i>
6 port	<i>PHE0613A0313AN</i>
7 port	<i>PHE0713A0313AN</i>

13AMP chassis mounted sockets with 13AMP UK mains plug fitted on 3Mtrs of cable. Maximum number of chassis mount connectors is 7. 1U height.



### Horizontal PDU IEC Sockets

4 port	<i>PHE04IEC03IETN</i>
6 port	<i>PHE06IEC03IETN</i>
8 port	<i>PHE08IEC03IETN</i>
10 port	<i>PHE10IEC03IETN</i>
12 port	<i>PHE12IEC03IETN</i>
16port (unswitched)	<i>PHE16IEC03IETN</i>

IEC 10AMP chassis sockets with 10AMP IEC plug fitted to UK 3Mtr mains cable Maximum number of chassis mount connectors is 16. 1U height.



### Vertical PDU UK13 AMP

6 port	<i>PVR0613A0313AN</i>
8 port	<i>PVR0813A0313AN</i>
10 port	<i>PVR1013A0313AN</i>
12 port	<i>PVR1213A0313AN</i>
15 port	<i>PVR1513A0313AN</i>

13AMP chassis mounted sockets with 13AMP UK mains plug fitted on 3Mtrs of cable. Maximum number of chassis mount connectors is 15. 1U height.



### Mains 3 Pin Plug to IEC 5AMP socket

2Mtr	<i>IEC-2-BLK</i>
2Mtr right angled	<i>IEC-2-BLKRA</i>
3Mtr	<i>IEC-3-BLK</i>

Moulded Black PVC with 3 pin UK plug on one end & the other with C13 socket rated at 5 AMPS.

## Mains 3 Pin C14 plug to C13 5 Amp socket

2Mtr	IEC/CEE22
3Mtr	IEC/CEE23

Moulded Black PVC with 3 pin C14 plug on one end & the other with C13 socket rated at 5 AMPS.



## Mains UK Extension Cables

2 gang 4Mtr	MM22262
4 gang 2Mtr	MM22263
6 gang 2Mtr	MM22260

White plastic rigid design with neon power indicators, twin socket comes with a 4Mtr cable as standard & the others with 2Mtr. Other sizes are available to special order.



## Mini5 low cost floor box (3 compartment)

3 compartment floor box with  
1 x twin switched 13 amp UK socket  
plate, 1 x blank plate & 1 x plate  
with 4 x IJ6C cut outs

*MTFB-3*

### Extra Plates for 3 compartment box

Plate with 2 x 13 amp UK  
switched sockets

*MTFB-P13A23*

Blank plate

*MTFB-PBLA3*

Plate with 4 x IJU6C  
(37x22mm)cut outs

*MTFB-PLJU43*

Plate with 2 x 86x86mm cut outs  
for single gang wallplates

*MTFB-PTD3W*

Knockouts for conduit/cable entry.

Overall dimensions:

310 x 220 x 100mm depth.

Floor panel cut out: 292 x 201mm



## Mini5 RJ45/BNC/USB Tester

Mini5 RJ45/BNC tester *MT1045USB*

This 3in1 continuity tester can be used on twisted pair, co-ax & USB cables. LED indication and one button operation.





### Mini5 RJ11/45 LED Tester

Mini5 RJ11/45 LED tester MT1045LED

Low cost 2 part RJ45 continuity test set with LED indicators for both main & remote unit. Simple one button testing.



### Mini5 RJ45/BNC Tester

Mini5 RJ45/BNC tester MT1045N

Low cost 2 part RJ45 continuity test set with LED indicators for both main & remote unit. Simple one button testing.



### Mini5 hook & loop cable ties

200mm length black MTVT-200BK

225mm length blue MTVT-225BE

300mm length black MTVT-300BK

325mm length blue MTVT325BE

Supplied in packs of 10. Re-useable & do not damage fibre/copper cable.



### Mini5 Nylon cable ties

100mm length x 2.5mm wide NT100\*

142mm length x 3.2mm wide NT142\*

203mm length x 3.2mm wide NT203\*

292mm length x 3.6mm wide NT292\*

\*Add B to the end of the part number for black or N for natural. Supplied in packs of 1000. Self locking non releasable. Flame retardent UL94V-2.