

Mini6™ MINI6 STRUCTURED CABLING

Mini6 structured cabling is a 15A/110 dual punch down solution available in both UTP & 10Gig STP versions. The Cat6 UTP is available in two versions, a lower cost entry level with high performance or component level in the 'Plus' version with increased performance. The recently released Cat6a 10Gig shielded solution, takes the Mini6 system to a new level and exceeds the current draft Cat6A. All Mini6 products are available with a 25 year installation warranty to accredited Mini6 installation engineers/solution providers.

Angled modules (Cat6)

Angled CAT6 UTP "Mini6"	MT66-SAMK
Angled CAT6 UTP "Mini6" with component level jack	MT66-SAMK+
Angled Module only (without jack)	MT50-SAMO

Shuttered 25x50mm modules with dual punchdown snap in jack. Label window & strain relief. Module without jacks accepts jacks shown right. Snaps into the wallplates (right). 2 modules per single gang frame & 4 per double. Suitable for 32mm back boxes. **CT19/28 tooling required.**

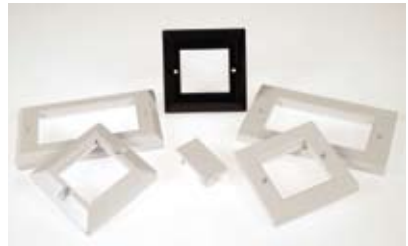


Wallplates & blanks (UK size*)

Single Gang Flat Wallplate	MT50-1000
Single gang Bevelled Wallplate	MT50-1000BD
Single gang Bevelled Black Wallplate	MT50-1000BDBK
Double Gang Flat Wallplate	MT50-2000
Double gang Bevelled wallplate	MT50-2000BD
Double gang Bevelled Black Wallplate	MT50-2000BDBK
25x50mm Half Blank	MT50-BM25
12.5x50mm Quarter Blank	MT50-BM125

Flat or bevelled design (86x86mm) used with modules shown left. Bevelled wallplates are available in black & white. Single gang faceplates accept 2 x 25x50mm modules, double gang accepts 4 x 25x50mm modules.

*Wall plates for other countries also available.



4 Way Single Gang Wallplates

4 way single gang wallplate without jacks	MT50-4000
--	-----------

Single gang wallplate with 4 shuttered module slots to accept the Mini6 jacks shown on page 10. DPI-45PWVB back box is recommended with this wallplate.

*Wall plates for other countries also available.





Mini6 CAT6 UTP jacks

UTP Black CAT6 component level jack	<i>MT66-U180BK+</i>
UTP Black CAT6 jack	<i>MT66-U180BK</i>
UTP White CAT6 jack	<i>MT66-U180WE</i>
UTP Blue CAT6 jack	<i>MT66-U180BE</i>
UTP Green CAT6 jack	<i>MT66-U180GN</i>
UTP Red CAT6 jack	<i>MT66-U180RD</i>
UTP Yellow CAT6 jack	<i>MT66-U180YW</i>

High performance CAT6 dual punch down jack compatible with LSA Krone & 110 tools. With clip on cable strain relief cap. Available in various colours for coding purposes.. Snaps into modular panels above. This is the same jack that is used in Mini6 wallplates giving balanced performance at each end.



LJ6C Cat6 modules for floor boxes & trunking

Cat6 flat UTP "Mini6"	<i>MT66-SLJKLP</i>
-----------------------	--------------------

Dual termination modules (see tooling on page 25) Used primarily in floor box & trunking (also snap into the wall plates below), modules measure 37x22mm. Flat modules are an ultra low profile design.



LJ6C Cat6 Angled Modules for Floor Boxes & Trunking

Cat6 angled UTP Mini6	<i>MT66-SLJK</i>
Cat6+ angled UTP Mini6 component level jack	<i>MT66-SLJK+</i>
LJ6C angled module only colour white	<i>MT50-SLOA</i>



LJ6 wall plates (UK size*)

Single position single gang	<i>MT50-116C</i>
Twin position single gang	<i>MT50-126C</i>
Four position double gang	<i>MT50-416C</i>
Blank module 25mm	<i>MT50-BM6C</i>
Blank module 12.5mm	<i>MT50-BM6C125</i>

Accepts the LJ6C modules shown above.

Decorative wall plates (UK size*)

Single gang (accepts 2
25x50mm modules) *MT50-1000***

Double gang (accepts 4
25x50mm modules) *MT50-2000***

** Add the following part number suffix: Antique bronze = AB, Brushed stainless steel = BS, Brass roped edge = RE, Polished steel = PS, Satin brass = SB Stepped edge brass = SE. Accepts 25x50mm modules in the Mini5/6, Hubbell, Nexans & Panduit ranges. Also accepts Nexans 50x50mm modules.



Mini6 modular/punchdown patch panels

24 port 1U without jacks,
with clip on strain relief bar *MT66-P241U*

48 port 2U without jacks,
with clip on strain relief bar *MT66-P482U*

24 port 1U loaded with black Cat6 UTP
jacks and clip on strain relief bar *MT66-CP241U*

48 port 2U loaded with black Cat6 UTP
jacks and clip on strain relief bar *MT66-CP482U*

24 port 1U loaded with component
level black Cat6 UTP jacks and clip on
strain relief bar *MT66-CP241UPLUS*

48 port 2U loaded with component
level black Cat6 UTP jacks and clip on
strain relief bar *MT66-CP482UPLUS*

Blank for unused positions in panel *MT66-BLNK*



Mini6 UTP thru coupler panel

24 port 1U with jacks & clip on
strain relief bar *MP24TP6*

48 port 2U with jacks & clip on
strain relief bar *MP48TP6*

Mini6 Cat6 UTP panels are a modular design and are available with or without connectors fitted. Each panel comes complete with cable strain relief bar, plastic slide-in label field below the ports.



Mini6 STP thru coupler panel

24 port 1U
with clip on strain relief bar *MT66-24TP6S*

Mini6 Cat6 shielded panel fitted with high quality shielded thru-coupler jacks. Can be used for Cat6A applications where high grade Cat6A or Cat7 patch cables are provided where shorter runs are required.





Mini6 CAT6 UTP LSOH patch leads with moulded boots

Length

0.5Mtr	PCTB6005*
1Mtr	PCTB6010*
1.5Mtr	PCTB6015*
2Mtr	PCTB6020*
3Mtr	PCTB6030*
5Mtr	PCTB6050*
7.5Mtr	PCTB6075*
10Mtr	PCTB6100*

* For coloured patch leads add the following suffix:

Black = BK, Orange = OE, Purple = PE, Pink = PK, White = WE, Blue = BE, Green = GN, Red = RD, Yellow = YW, No suffix required for grey.

Example: Red 2Mtr = PCTB6020RD

Staggered internal contact design on high performance RJ45 plug & LSOH cable. Flush moulded boots ensure that they can be connected to any RJ45 socket.

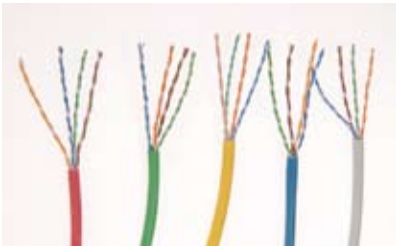


Mini6 CAT6 solid cable

Mini6 CAT6 (305Mtr boxes)

Cat6 UTP grey LSOH	UTP4M6SB-LS
--------------------	-------------

Low cost solid cable in 305Mtr easy pull boxes. Metre marked from 305Mtrs downwards to determine how much cable is left in a part used box. Approved for use in the Mini5/6 25 year system warranty programme.



Mini6 CAT6 patch cable

Mini6 Cat6 UTP patch

Grey LSOH (305Mtr box)	UTP4M6PB-LS
Blue LSOH (305Mtr box)	UTP4M6PB-LSBE
Green LSOH (305Mtr box)	UTP4M6PB-LSGN
Red LSOH (305Mtr box)	UTP4M6PB-LSRD
Yellow LSOH (305Mtr box)	UTP4M6PB-LSYW

Stranded patch cable in 305Mtr boxes.

Mini6 External Cat6 UTP solid cable

Cat6 305 Mtr box

UTP4M6SB-EXT

External UTP solid cable in a black water resistant polyethylene outer sheath.



Mini6 CAT6 Transition Point

Cat6 UTP

MT66-C6EB

Cat6 STP

MT66-C6ES

For punching down and joining two ends of CAT6 cable. Dual punchdown blocks.



Mini6 CAT6 Couplers

Free hanging couplers

RJ45 CAT6 UTP (Black)

RJ45FCBE6

RJ45 CAT6 STP

RJ45FCBS6

Panel mount couplers

RJ45 CAT6 UTP (Black)

RJ45PCBK6

RJ45 CAT6 STP

RJ45PCSH6

For thru coupler panels see page 11.



Free Hanging



Panel Mount

Mini6A designed to provide a 10Gig system (10G base-T) in a modular shielded solution.



Cat6A STP Jack (10GBase-T)

10 gig STP jack *MT66-TGSJ*

Fully shielded tool-less 10 gig jack suitable for both panel and wall plate modules (MT50-SAMO). Recommended use with the bevelled frames for lower depth in the back box.



Cat6A Modular Panel (10GBase-T)

24 port with cable management *MT66-SP24IU*

Black panel with each port individually numbered to accept 10 gig shielded jack MT66-TGSJ. Cable management bar provided to support the additional weight of the Cat6A shielded cable.



Cat6A Shielded Cable (10GBase-T)

S/FTP LSOH orange 500mtr *7002-4P-500*

S/FTP LSOH orange 1000mtr *7002-4P-1000*

Mini6A shielded 10 gig cable in LSOH orange outer sheath. Manufactured by Datwyler and meeting ISO/IEC 11801:2002, EN 50173-1 and EN 50288-4-1. Excellent screening performance due to individual foil screened pairs and overall copper braid.



Cat6A Shielded Patch Cable (10GBase-T)

1mtr *PCTS6010A*

1.5mtr *PCTS6015A*

2mtr *PCTS6020A*

3mtr *PCTS6030A*

5mtr *PCTS6050A*

10mtr *PCTS6100A*

Manufactured in LSOH grey cable. Meets EIA/TIA 568B and ISO/IEC 11801 standards, class E connector chanel 500Mhz (10G Base-T) colours available to special order.